

# LABELS THAT STICK & STAY STUCK



RHINO labels are as dependable as the RHINO 5000. Easy to use and super-strong, they're designed for the long haul. Thanks to industrial-strength adhesives, they deliver the lasting durability and legibility you demand - in five materials, for a multitude of applications. To meet your high standards, RHINO labels are designed to work exclusively with our printers and perform on any surface you encounter.

- Easy-to-peel, split-back styles will speed you along.
- Industrial-strength adhesives help these labels stick and stay stuck – even in harsh environments.
- Thermal transfer print technology produces labels that are durable, smear-proof and resistant to chemicals, solvents, heat, UV and more.



## AVAILABLE KITS



**RHINO 5000 Industrial Labelling Tool**  
Part No. SD15517 EAN: 0071701155177

*Includes:*  
RHINO 5000  
Impact-resistant rubber bumper  
One black-on-white 19mm flexible nylon label cassette  
Quick Start Guide  
Instruction Manual  
Limited One-Year Warranty

Weight: 725 grams  
Dimensions: 222mm x 121mm x 76mm



**RHINO 5000 Hard Case Kit**  
Part No. SD15603 EAN: 9313139220012

*Includes:*  
RHINO 5000  
Impact-resistant rubber bumper  
Durable, hard carry case  
One black-on-white 19mm flexible nylon label cassette  
One black-on-white 19mm permanent polyester label cassette  
AC power adapter  
6 "AA" Alkaline batteries  
Instruction Manual  
Limited One-Year Warranty

Weight: 1951 grams  
Dimensions: 445mm x 337mm x 290mm (LxWxH)

## RHINO™ LABELS

**FLEXIBLE NYLON** – Curved or flat surfaces.

Wires, patch panels, machinery, equipment, bins, etc.



PART #	DESCRIPTION	LENGTH
SD18488	White Flexible Nylon Tape 12mm	3.5m
SD18489	White Flexible Nylon Tape 19mm	3.5m
SD18490	Yellow Flexible Nylon Tape 12mm	3.5m
SD18491	Yellow Flexible Nylon Tape 19mm	3.5m

**PERMANENT POLYESTER**

– Flat surfaces. Equipment, bins, patch panels, etc.



PART #	DESCRIPTION	LENGTH
SD18482	White Perm Poly Tape 9mm	5.5m
SD18483	White Perm Poly Tape 12mm	5.5m
SD18484	White Perm Poly Tape 19mm	5.5m
SD18508	Clear Perm Poly Tape 9mm	5.5m
SD18486	Metallized Perm Poly Tape 12mm	5.5m

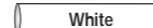
**VINYL** – All surfaces. Ideal for outdoor and color-coding applications.

Warning messages, wires, patch panels, equipment, machinery, etc.



PART #	DESCRIPTION	LENGTH
SD18443	White Vinyl 9mm	5.5m
SD18444	White Vinyl 12mm	5.5m
SD18445	White Vinyl 19mm	5.5m

**HEAT SHRINK TUBE** – Wire and cable.



PART #	DESCRIPTION	LENGTH
SD18051	White Heat Shrink Tube 6mm	1.5m
SD18053	White Heat Shrink Tube 9mm	1.5m
SD18055	White Heat Shrink Tube 12mm	1.5m
SD18057	White Heat Shrink Tube 19mm	1.5m

# RHINO™ 5000

## PROFESSIONAL LABELLING TOOL

Datacom  
Electrical  
MRO  
Construction  
Broadcasting



**RHINO 5000** is the tough, affordable labelling tool that outperforms even higher priced labelling solutions in real-world, jobsite conditions. Built for speed and durability, its exclusive one-touch hot keys give you commonly used label formats – like wire wraps and patch panels – at your fingertips.

Want to build your professional reputation? Labelling with the RHINO 5000 gives your installations a neat, finished look. Plus, easy-to-load, easy-to-peel RHINO label cartridges feature industrial-strength adhesives so your labels will stick and stay stuck.

## 5000 Features:

- The Wrap "Hot Key" enables you to select the wire/cable size so RHINO 5000 can auto-size the text and label length to fit that wire.
- The Patch Panel "Hot Key" creates one label with serialized port numbers and proper distance between ports.
- The Fixed "Hot Key" creates perfectly-sized labels for racks, faceplates, storage bins and more – saving you valuable time.

**DYMO**®

**SANFORD BRANDS**

A Division of **NewellRubbermaid**

Sanford Australia, 1–11 Keysborough Ave,  
Keysborough, Victoria, 3173, Australia  
Customer Service Toll Free: 1800 727 537

Sanford New Zealand, 1 Verissimo Drive,  
Mangere, Auckland, New Zealand  
Customer Service Telephone: 0800 848 111  
www.dymo.com

**RHINO**   
PROFESSIONAL LABELLING TOOLS  
HOW DO YOU SIGN YOUR WORK?™

25719 1006

**RHINO**   
PROFESSIONAL LABELLING TOOLS  
HOW DO YOU SIGN YOUR WORK?™

# RHINO™ 5000

PROFESSIONAL LABELLING TOOL

Put the power of RHINO 5000 in your hands. In just seconds, create long-lasting labels for wire wrapping, patch panels, terminal blocks and more. Crisp, clear thermal-transfer printing resists smears, chemicals, solvents, UV, heat – whatever your worksite can hand out. And, you'll have an easy handle on things with the RHINO 5000's lightweight portability, bright backlit display and impact-resistant protective rubber bumper. Tired of fumbling with difficult-to-remove label backing? Our easy-to-peel labels feature a split-back design for "get-it-done-now" efficiency.

**Battery Life Indicator**  
Combined with "automatic shutoff" technology, you won't run short of power on the job.

**Backlit Display**  
Essential for labelling in low-light environments.

**Wrap**  
Automatically selects the right label size – and the largest text size – for maximum legibility on any cable or wire. Differentiates between 6 and 9, 1 and 1, 0 and O. Repeats text for 360° identification.

**Fixed**  
Automatically centers and prints a specified label length – ideal for racks, outlets, bins, warehouse applications and more.

**Patch Panel**  
Saves keystrokes while automatically centering and spacing text to fit each port. Serializes text to eliminate repetitive typing: great for datacom, RF, even fibre patch panels.

**Impact-Resistant Rubber Bumper**  
Protects your RHINO 5000 from accidental falls or harsh jobsite conditions.



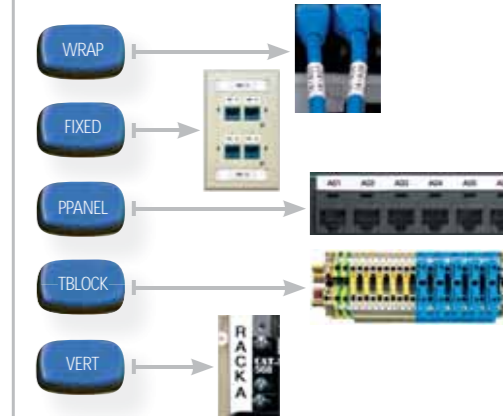
**Bar Code**  
Prints Bar Code 39 and Code 128 on 19mm labels.

**Terminal Block**  
The Terminal Block Key lets users create perfectly spaced, auto-serialized labels for vertically aligned Terminal Blocks – ideal for all electrical jobs.

**"Symbols" Library**  
When words won't do, we've provided a wide range of the symbols for graphic, professional labelling in all types of applications: ⚠️ 🔌 📶 🛠️

# DURABLE

## LABEL Hot Keys



## HOW TO PRINT...

### WRAP

1 Enter text, (eg. 123)

2 Press WRAP

3 Select the size of cable or wire using the navigation key (eg. CAT X/Coax). Press ENTER

4 Press PRINT

### PATCH PANEL

1 Enter text (eg. A01)

2 Press PPANEL

3 Select the distance between ports using the navigation key (eg. Δ= 15mm) Press ENTER

4 Press SERIAL

5 Enter the number of ports desired (eg. 6) Press ENTER

# FAST

# EASY